

FIEESTA 6MM

Aquacoustic

HYBRID

SPC



atfa[®]

Australasian timber flooring association
Local professionals, world-class standards

STONE POLYMER COMPOSITE

- a sustainable flooring solution -



Quick and easy



Eco-friendly
Formaldehyde free



Click system



High water resistance



Good foot feel



Acoustic qualities



Pet-friendly



Durable, easy to
clean and maintain



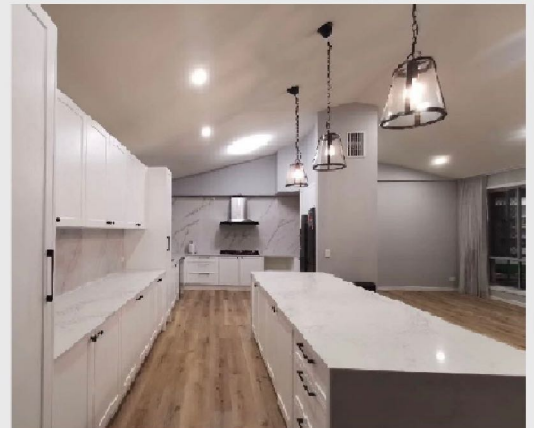
No scratches and dents
(High Heel Safe)



Sound reducing
attached underlay



25 year residential warranty;
5 year commercial warranty



Why choose SPC?

High water resistance

water resistant, can be installed in kitchens, bathrooms, laundry rooms and restaurants without any worries!

Affordability

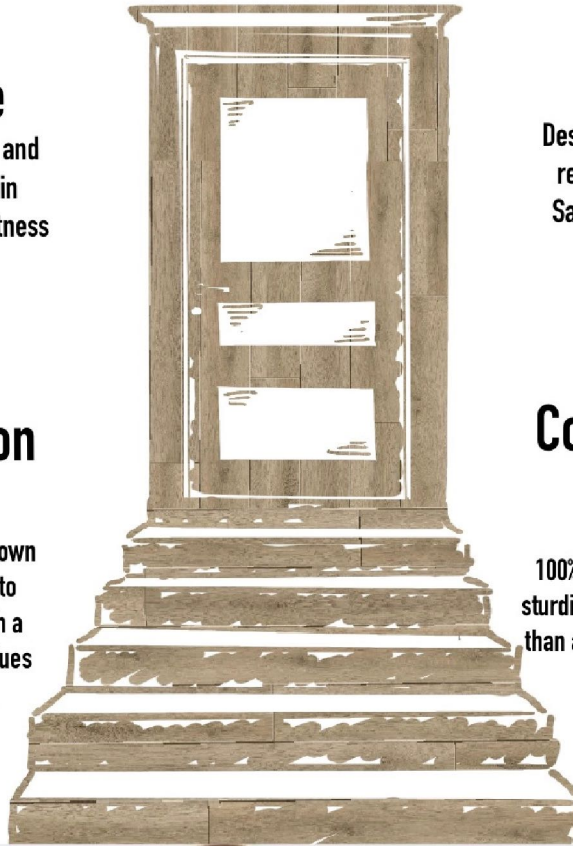
Budget-friendly. No further spending on underlay as it can be installed as-is on the subfloor. This not only helps save time on installation, but also makes DIY flooring jobs easier.

Stability

The SPC vinyl core is more stable in environments with temperature change, such as cabins, homes with AC units and homes with humidity fluctuations.

Hardwood Appearance

A variety of looks, textures and styles. SPC can be fitted in bathrooms, kitchen, yoga/fitness studios etc.



Easy Maintenance

Designed to be easily cleaned with regular sweeping and mopping. Same cleaning and maintenance needs as regular vinyl.

Click-installation System

40% faster to install than glue down floors. It is installed similarly to regular vinyl and laminate with a click-system installation. No glues or extra tools are required.

Comfort, Health & Quiet

Formaldehyde free!
100% natural cork backing makes SPC sturdier, cushioned and softer under foot than a traditional vinyl. No hollow sound when walking on it.



Midnight Oak
GESPC0601

Bleached Oak
GESPC0602

Washed Oak
GESPC0603

Smoulder Oak
GESPC0604

SPC Colour Range

Hybrid Fiesta 6mm

Black Butt
GESPC0605

Spotted Gum
GESPC0606

Grand Oak
GESPC0607

Brushed Oak
GESPC0608



Aged Oak

GESPC0609

Ivory Ash

GESPC0610

Baltic Grey

GESPC0611

Golden Teak

GESPC0612

Kempas

GESPC0613

Heartridge Oak

GESPC0614

Coastal Limed Oak

GESPC0615

Coastal Spotted Gum

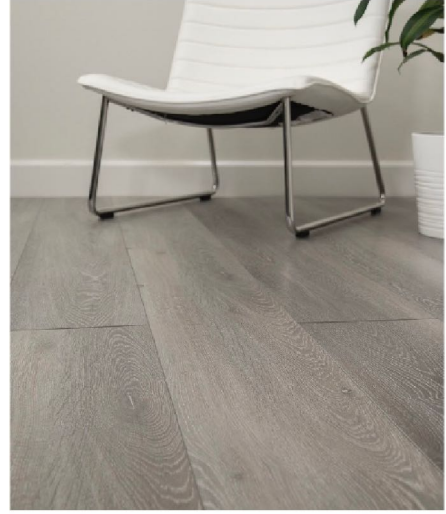
GESPC0616

Limed Grey Oak

GESPC0617



GALLERY



BRUSHED OAK

GESPC0608



SPECIFICATIONS

SPC NATIVE 8.0		SPC FIESTA 6.0	
PLANK THICKNESS	8mm (0.55mm wear layer)	PLANK THICKNESS	6mm (0.55mm wear layer)
PLANK SIZE	1830mm X 183mm	PLANK SIZE	1500mm X 230mm
BOX	5 PCS	BOX	7 PCS
AREA PER BOX	1.68M ²	AREA PER BOX	2.42M ²
COLOURS	7	COLOURS	17

TECHNICAL DATA	
TYPE	HYBRID
BACKING LAYER	1.5MM ACOUSTIC CORK
SUBSTRATE LAYER	ENGINEERED RIGID CORE
TOP LAYER	DURABLE WEAR LAYER
PROTECTIVE COATING	CERAMIC MATT UV COATING
INSTALLATION METHOD	CLICK SYSTEM



TEST REPORT

SGS

TEST REPORT		
TEST ITEM	DATA / CONCLUSION	
WET PENDULUM TEST	SLIP RESISTANCE VALUE: 40	CLASS: P3
FIRE TEST	MEAN VALUE: 8.6 kW/M ²	CHARRING
LOCKING STRENGTH	659.2N / 1209N	
ABRASION RESISTANCE	PASS	SWELLING: 0-0.1%
DBP/ BBP/ DEHP/ DIBP/ DNOP/DMP/ DPhP/ DnHP/ DEP CONTENT(S)	PASS	
PEEL STRENGTH	37.7N/25mm	PASS
MIGRATION OF CERTAIN ELEMENTS	PASS	
RESISTANCE TO SURFACE WEAR	PASS	
COLOUR FASTNESS TO LIGHT	BETTER THAN 6 GRADE (B.W.S)	
FORMALDEHYDE	0.003 MG/M ³	E0
OTHER VOLATILE ORGANIC COMPOUNDS	NOT DETECTABLE	PASS
ACOUSTIC TEST	L'nT,w: 52 / FIIC: 51	PASS



Golden Elite Group

atfa[®]
Australasian timber flooring association
Local professionals, world-class standards

ADDRESS: 2/232 Holt St, Pinkenba QLD

EMAIL: orders@goldenelitegroup.com.au

WEBSITES: <http://www.goldenelitegroup.com.au>

<http://www.newpearl.com>

Call us at (07) 3189 7117 for any enquires!.

More info

For more information on our
warranty, brochures and test reports, visit:

www.GoldenEliteGroup.com.au

Or scan me for more info:



Golden Elite Group



CONTACT US

(07) 3189 7117

ADMIN@GOLDENELITEGROUP.COM.AU

WWW.GOLDENELITEGROUP.COM.AU

Proud to be a Member of the

atfa[®]
Australian Timber Flooring Association
Lead professionals, world-class standards